



Picture is a representation of actual product.

Standard Features

- Cost- and time-efficient installation; no need to remove weighbridge
- Converts existing scale capacities of 40,000 lb-300,000 lb (18,143.7 kg-90,718.7 kg)
- Four, six or eight-mount kits for two, three or four-section conversions
- Translink™ heavy-capacity mounting assemblies
- Free movement in all directions in the horizontal plane with virtually no friction
- Completely self-centering
- Requires no check rods
- Capacity per mount: 25,000 lb-100,000 lb (11,339.8 kg-45,359.4 kg)
- Utilizes cells with 3 mV/V output

Full electronic performance can be achieved at a fraction of the cost of a new scale and pit. The Motor Truck Scale (MTS) Electronic conversion kit is designed to transform an existing scale pit and weighbridge into a fully electronic vehicle scale. Designed for quick installation without removing the platform or reconfiguring the pit, the conversion kit can often be installed in a matter of days, minimizing downtime. This ease of installation is important when considering installations where it is not feasible to completely remove the existing scale.

Optional Features

- Custom heights available; consult
- RLWS RL75223 welded-seal, VPG® Sensortronics 65040A or RTI 5223 load cells

Applications

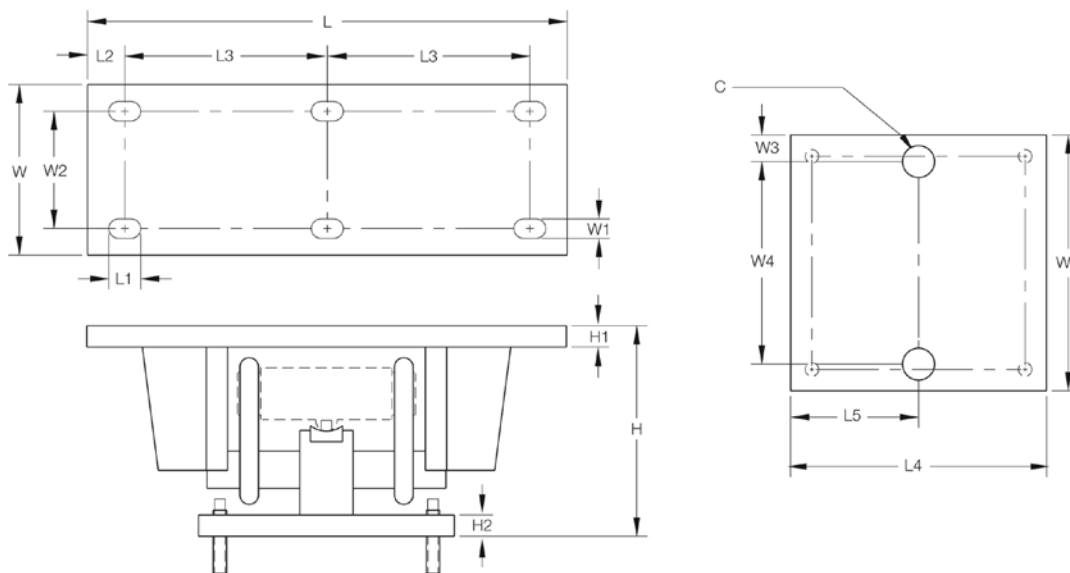
- Updating existing mechanical motor truck scales
- Replacing unsatisfactory electronic motor truck scales
- Conversion of heavy-capacity scales into fully electronic vehicle scales where the existing scale cannot be removed

Complete Kit Includes

- One JB8SP NEMA Type 4X signal-trim junction box with individual and section trimming capability (six and eight-mount kits) or one JB4SP NEMA Type 4X signal-trim junction box (four-mount kits)
- One UJB3T6 DC transient protector
- Four, six or eight Translink mounting assemblies with RL75040 or RL75223 load cells
- 100 ft of hostile environment EL147HE SURVIVOR® load cell cable

Motor Truck Scale Electronic Conversion Kit

Rice Lake Weighing Systems



Dimensions

Rated Capacity	C	H*	H1	H2	L	L1	L2	L3	L4	L5	W	W1	W2	W3	W4**	W5
lb/in																
50,000-100,000 (RL75223)	1.50	12.93	1.00	1.00	22.50	1.50	1.75	9.50	11.75	5.88	7.75	0.91	5.25	1.25	9.25	11.75
25,000-40,000 (RL75040A)	1.50	9.88	1.00	1.00	18.50	1.50	1.75	7.50	11.75	5.88	7.75	0.91	5.25	1.25	9.25	11.75
50,000-75,000 (RL75040A)	1.50	12.82	1.00	1.00	22.50	1.50	1.75	9.50	11.75	5.88	7.75	0.91	5.25	1.25	9.25	11.75
kg/mm																
22,679.6-45,400.00 (RL75223)	38.1	328.4	25.4	25.4	571.5	37.5	44.5	241.3	298.5	149.4	196.9	23.1	133.4	31.8	235.0	298.45
11,339.8-18,143.7 (RL75040A)	38.1	251.0	25.4	25.4	469.9	37.5	44.5	190.5	298.5	149.4	196.9	23.1	133.4	31.8	235.0	298.45
22,679.6-34,019.4 (RL75040A)	38.1	325.6	25.4	25.4	571.5	37.5	44.5	241.3	298.5	149.4	196.9	23.1	133.4	31.8	235.0	298.45

*Custom heights available; consult

**Custom hole spacing for existing bolt patterns is available; consult

Order Information

Scale Suggested Capacity	Load Cell Capacity (Per Module)		Part #	Price	Load Cell Used In Kit	
4-Module Kit (Includes Weigh Modules Load Cells, Junction Box, and Transient Protection)						
40,000 lb	18,143.7 kg	25,000 lb	11,339.8 kg	30513	Consult	RL75040A
60,000 lb	27,215.6 kg	40,000 lb	18,143.7 kg	30514	Consult	RL75040A
6-Module Kit (Includes Weigh Modules Load Cells, Junction Box and Transient Protection)						
100,000 lb	45,359.4 kg	50,000 lb	22,679.6 kg	30515	Consult	RL75040A
120,000 lb	54,431.2 kg	60,000 lb	27,215.6 kg	30516	Consult	RL75040A
8-Module Kit (Includes Weigh Modules Load Cells, Junction Box and Transient Protection)						
120,000 lb	54,431.2 kg	60,000 lb	27,215.6 kg	30517	Consult	RL75040A
200,000 lb	90,718.7 kg	75,000 lb	34,019.4 kg	30518	Consult	RL75040A
300,000 lb	SD 136,078.1 kg	100,000 lb	45,359.4 kg	30512	Consult	RL75223

SD refers to super duty, 100,000 lb (45,359.4 kg) capacity welded-seal load cells