

EZ Mount 1

Mild Steel Weigh Modules, Rice Lake Weighing Systems



Available in configurations with three or four mounting assemblies.
Picture is a representation of actual product.

The EZ Mount 1 Series weigh modules utilize the double-ended beam design with an articulating top plate to provide superior accuracy in any loading condition. The double-ended beam design means there is less cumbersome hardware and each module has a lower profile than modules of different configurations. NTEP Certified and FM approved RL70000 Series load cells give you accuracy and dependability in many applications, including intrinsically safe and explosion proof areas.



Module with RL70000 double-ended shear beam load cell.

Standard Features

- Capacities (per module): 5,000 lb-250,000 lb (2,268 kg-113,398.1 kg)
- NTEP Certified load cells
- Unique sliding pin design compensates for thermal expansion/contraction
- Self-checking
- Easy load cell replacement
- Simplified design allows bolting directly to tank and floor
- Center-loaded, double-ended shear beam design
- Low-profile design
- Painted mild steel construction

Optional Features

- Kits available with VPG® Reverse 5103 load cell, capacities in 5,000 lb-150,000 lb (2,268.0 kg-68,039.0 kg)

Applications

- Medium- to heavy-capacity tank and hopper weighing applications

Complete Kit Includes

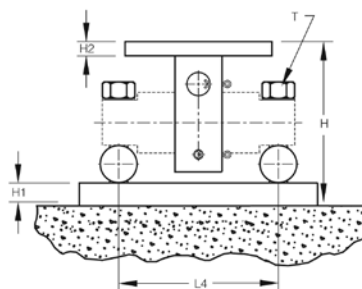
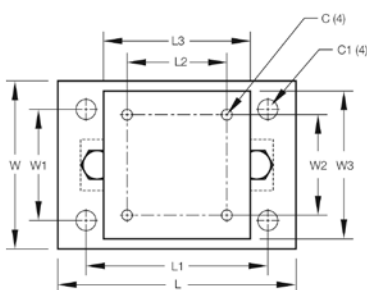
- One JB4SS NEMA Type 4X stainless steel signal trim junction box
- Three or four EZ Mount 1 mild steel compression mounts
- Three or four RL70000 double-ended shear beam load cells
- 25 ft of our hostile environment EL147HE SURVIVOR® load cell cable

Load Cell Certifications



EZ Mount 1

Mild Steel Weigh Modules, Rice Lake Weighing Systems

**Dimensions**

| Rated Capacity | C | C1 | H | H1 | H2 | L | L1 | L2 | L3 | L4 | T | W | W1 | W2 | W3 |
|--------------------|------|------|-------|------|------|-------|-------|-------|-------|-------|--------------|-------|-------|-------|-------|
| lb/in | | | | | | | | | | | | | | | |
| 5,000-20,000 | 0.56 | 1.06 | 5.31 | 0.75 | 0.50 | 11.00 | 8.00 | 3.00 | 6.00 | 6.87 | 5/8-18 UNF | 7.50 | 4.00 | 3.00 | 6.00 |
| 30,000-60,000 | 0.68 | 1.19 | 8.43 | 1.00 | 0.75 | 15.00 | 11.50 | 5.12 | 8.00 | 8.50 | 1-14 UNS | 10.00 | 6.00 | 5.12 | 8.00 |
| 100,000 | 0.81 | 1.38 | 10.37 | 1.25 | 1.25 | 18.00 | 14.00 | 7.50 | 10.00 | 9.50 | 1-14 UNS | 12.00 | 9.00 | 7.50 | 10.00 |
| 150,000 | 0.81 | 1.38 | 10.37 | 1.25 | 1.25 | 18.00 | 14.00 | 7.50 | 10.00 | 9.50 | 1-14 UNS | 12.00 | 9.00 | 7.50 | 10.00 |
| 200,000-250,000 | 1.06 | 1.88 | 16.75 | 2.00 | 2.00 | 26.00 | 20.00 | 9.00 | 12.00 | 13.00 | 1 1/2-12 UNS | 12.00 | 6.00 | 9.00 | 12.00 |
| kg/mm | | | | | | | | | | | | | | | |
| 2,268.0-9,071.9 | 14.2 | 26.9 | 134.9 | 19.1 | 12.7 | 279.4 | 203.2 | 76.2 | 152.4 | 174.5 | 5/8-18 UNF | 190.5 | 101.6 | 76.2 | 152.4 |
| 13,607.8-27,215.5 | 17.3 | 30.2 | 214.1 | 25.4 | 19.1 | 381.0 | 292.1 | 130.0 | 203.2 | 215.9 | 1-14 UNS | 254.0 | 152.4 | 130.1 | 203.2 |
| 45,359.2 | 20.6 | 35.1 | 263.4 | 31.8 | 31.8 | 457.2 | 355.6 | 190.5 | 254.0 | 241.3 | 1-14 UNS | 304.8 | 228.6 | 190.5 | 254.0 |
| 68,039.0 | 20.6 | 35.1 | 263.4 | 31.8 | 31.8 | 457.2 | 355.6 | 190.5 | 254.0 | 241.3 | 1-14 UNS | 304.8 | 228.6 | 190.5 | 254.0 |
| 90,718.5-113,398.1 | 26.9 | 47.8 | 425.5 | 50.8 | 50.8 | 660.4 | 508.0 | 228.6 | 304.8 | 330.2 | 1 1/2-12 UNS | 304.8 | 152.4 | 228.6 | 304.8 |

Order Information

| Load Rating (Per Module) | Part# | Price |
|---|-------|---------|
| Single Module (Does NOT Include Load Cell) | | |
| 5,000 lb-20,000 lb | 17823 | Consult |
| 30,000 lb-60,000 lb | 17824 | Consult |
| 100,000 lb* | 17850 | Consult |
| 150,000 lb | 29012 | Consult |
| 200,000 lb-250,000 lb | 26068 | Consult |
| 3-Module Kit | | |
| 5,000 lb | 18163 | Consult |
| 10,000 lb | 18164 | Consult |
| 20,000 lb | 18165 | Consult |
| 30,000 lb | 32164 | Consult |
| 40,000 lb | 32167 | Consult |
| 50,000 lb | 18166 | Consult |
| 60,000 lb | 18167 | Consult |
| 100,000 lb* | 18168 | Consult |
| 150,000 lb | 43290 | Consult |
| 4-Module Kit | | |
| 5,000 lb | 18169 | Consult |
| 10,000 lb | 18170 | Consult |
| 20,000 lb | 18171 | Consult |
| 30,000 lb | 32165 | Consult |
| 40,000 lb | 32166 | Consult |
| 50,000 lb | 18172 | Consult |
| 60,000 lb | 18173 | Consult |
| 100,000 lb* | 18174 | Consult |
| 150,000 lb | 43291 | Consult |

*Load cell bolts protrude from bottom of base plate 0.25 in

VPG Revere® 5103 Mild Steel Order Information

| Load Rating (Per Module) | Part# | Price |
|---|--------|---------|
| 3-Module Kit | | |
| 5,000 lb | 18175 | Consult |
| 10,000 lb | 18176 | Consult |
| 20,000 lb | 18177 | Consult |
| 30,000 lb | 32169 | Consult |
| 40,000 lb | 32171 | Consult |
| 50,000 lb | 18178 | Consult |
| 60,000 lb | 18179 | Consult |
| 100,000 lb* | 18180 | Consult |
| 150,000 lb | 18181 | Consult |
| 4-Module Kit | | |
| 5,000 lb | 18182 | Consult |
| 10,000 lb | 18183 | Consult |
| 20,000 lb | 18184 | Consult |
| 30,000 lb | 32170 | Consult |
| 40,000 lb | 32172 | Consult |
| 50,000 lb | 18185 | Consult |
| 60,000 lb | 18186 | Consult |
| 100,000 lb* | 18187 | Consult |
| 150,000 lb | 18188 | Consult |
| Dummy Load Cells | | |
| 5,000 lb-20,000 lb | 33749 | Consult |
| 30,000 lb-60,000 lb | 74016 | Consult |
| 100,000 lb | 94175 | Consult |
| 150,000 lb | 158715 | Consult |
| Grounding Kit | | |
| 5,000-60,000, includes ground strap and mounting hardware per mount | 126419 | Consult |