

# CB-3 Concrete Batch Controller

Multi-Scale Automated Batching System with PC Program



## Standard Features

*(Note: Factory field installation required, minimum of three days on-site)*

- One aggregate and one cement scale, metered water scale is standard for 177746
- Manual override controls
- Customized batch ticket printing
- 128 gigabyte data storage
- Material usage by day/week/month/year and inventory on-hand with reporting
- Automatic aeration control for cement silos and weigh hoppers
- Multiple freefall values per material
- Split batching for loads larger than plant capacity with pre-weighing next batch
- Automatic dust collection outputs
- Order based batching
- US standard or metric (SI) operation
- Aggregate conveyor
- Loss-in-weight aggregate dispensing
- Four dual or eight single speed aggregates
- Four dual or eight single speed cements
- Weighed water with water reservoir (only with PN 177747)
- Four or eight auxiliary manual controls
- Mixer controls for central mix block or precast plants
- Ethernet TCP/IP
- Up to six admixtures
- Multi-user interface
- Dual moisture probe interface supports 4-20 mA

## Optional Features

- Monitor
- Keyboard
- USB hub four ports
- USB Wi-Fi dongle
- Mouse
- Additional four admixture control box
- Portable batch plant system
- Control panel for remote batching

## Specifications: Industrial PC

**Model:**  
B&R APC2100

**Processor Type:**  
Intel Atom E3845  
Quad Core

**Data Storage Type:**  
Industrial CFast Card

**Data Storage Capacity:**  
128 GB

**Interfaces:**  
Two USB  
Two Ethernet

**Monitor Output:**  
One SDL/DVI

**Operating System:**  
Linux Ubuntu 16.04

**Voltage:**  
24 VDC

## Specifications: 920i

**Line Voltages:**  
115 or 230 VAC

**Frequency:**  
50 or 60 Hz

**Power Consumption:**  
500 mA, maximum at 115 VAC (26 W) / 240 mA at 230 VAC (26 W)

**Full Scale Input Signal:**  
Up to 40 mV

**Excitation Voltage:**  
10 ±0.5 VDC, 16 x 350 Ω or 32 x 700 Ω load cells per A/D card

**Sense Amplifier:**  
Differential amplifier with 4 and 6 wire sensing

**Analog Signal Input Range:**  
-10 mV to +40 mV

**Analog Signal Sensitivity:**  
0.3 μV/graduation minimum at 7.5 Hz  
1.0 μV/graduation typical at 120 Hz  
4.0 μV/graduation typical at 960 Hz

**A/D Sample Rate:**  
60 Hz

**Calibration Method:**  
Software, contents stored in flash memory

**Input Overload:**  
Load cell signal lines ±10 V continuous, ESD protected

**RFI/EMI Protection:**  
Signal, excitation and sense lines protected

**Microcomputer:**  
Motorola ColdFire® MCF5307 main processor at 90 MHz

**Digital Filter:**  
Software selectable: 1–256, enhanced RATTLETRAP® hybrid digital filtering

**Display:**  
(W x H) 4.6 in x 3.4 in (116 mm x 86 mm),  
320 x 240 pixel VGA liquid crystal display (LCD)  
module with adjustable contrast, 75 Hz scan rate  
26,000 cd/m<sup>2</sup> brightness

**Keyboard:**  
27-key membrane panel

**Warranty:**  
Two-year limited warranty

# CB-3 Concrete Batch Controller

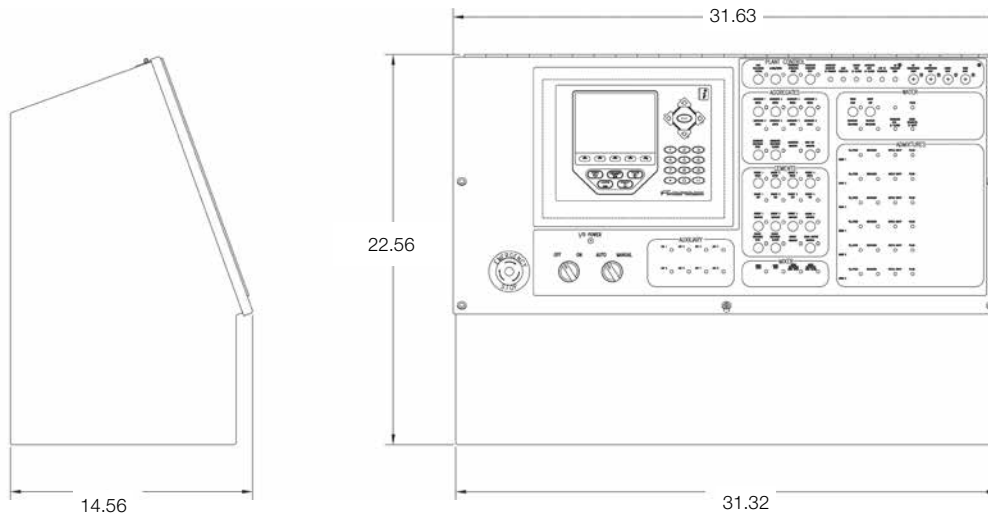
Multi-Scale Automated Batching System with PC Program

## Part Number/Price

Part#	Description	Est. Weight	Price
177746	CB-3 concrete batching controller, metered water, PC included	180 lb	Consult
177747	CB-3 concrete batching controller, weighed water, PC included	180 lb	Consult
FLD-INSTALL	Factory field installation required (minimum 3 days on site)		Consult per day
FLD-INSTALLSA	Factory field installation, Saturday		Consult
FLD-INSTALLSU	Factory field installation, Sunday		Consult

## Options/Accessories

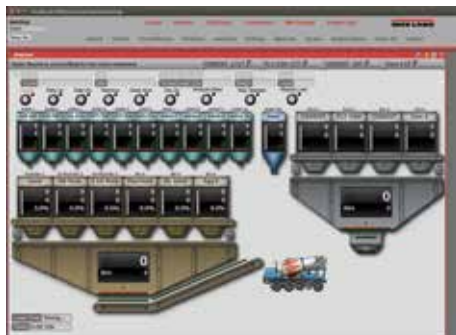
Part #	Description	Price
184716	Upgrade kit CB-1 to CB-3, PC included	Consult
175877	Upgrade kit CB-2 to CB-3, PC included	Consult
179209	Accessory kit (includes monitor, keyboard, USB hub and mouse)	Consult
179210	Monitor, Acer	Consult
179211	Keyboard, Microsoft	Consult
179212	Mouse, Microsoft	Consult
185667	USB Hub	Consult
186277	Wireless USB adapter WI-FI	Consult



CB-3 Ticket Output



CB-3 Truck Monitoring Screen



CB-3 Batcher Screen