

MAS-LC

Load Cell Animal Scale

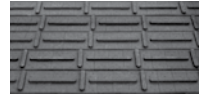


22 ft x 10 ft



Standard Features

- Field configurable gates for opening to the left or right
- Bolt-on racks and gates
- Durable X-Lug or X-Plank floor over steel I-beam
- Solid 48 in kick panel sides
- Solid 48 in kick panel gate
- Spring loaded latch on gates
- Rugged all weather powder paint
- Scale collapses for shipping
- Factory assembly at no charge

*X-Plank rubber floor**X-Lug rubber floor*

APPROVALS



Measurement
Canada
Approved

Specifications

Full Scale Capacity:

25,000 lb

Inside Dimension:

(L x W) 12 ft 1 in x 6 ft 6 in

(L x W) 14 ft x 6 ft 6 in

(L x W) 16 ft x 6 ft 6 in

(L x W) 18 ft x 6 ft 6 in

(L x W) 20 ft 11 in x 6 ft 6 in

(L x W) 20 ft 11 in x 9 ft

Outside Dimension:

(L x W) 13 ft x 8 ft

(L x W) 15 ft x 8 ft

(L x W) 17 ft x 8 ft

(L x W) 19 ft x 8 ft

(L x W) 22 ft x 10 ft

Decking:

X-Lug or X-Plank rubber deck with
steel I-beam construction

Racks and Gates:

Constructed of three inch steel main tubes;
two inch steel support tubes

Two end swing gates with latch (gates swing
outward from scale)

Height:

Ground to top of swinging gate: 6 ft 7 in

Ground to top of up and over rack: 8 ft 1 in

Ground to weigh platform: 8 in

Warranty:

Two-year limited warranty on the weighbridge

Two-year parts and electronics warranty

Approvals:

NTEP CC 99-091

Measurement Canada AM 5284

Part Number/Price

Part #	Inside Dimensions (L x W)	Outside Dimensions (L x W)	Description	Est. Weight	Price
X-Lug Flooring					
192672	12 ft 1 in x 6 ft 6 in	13 ft x 8 ft	Multiple animal scale - load cell design, X-Lug	4,540 lb	Consult
192670	14 ft x 6 ft 6 in	15 ft x 8 ft	Multiple animal scale - load cell design, X-Lug	4,920 lb	Consult
192669	16 ft x 6 ft 6 in	17 ft x 8 ft	Multiple animal scale - load cell design, X-Lug	5,420 lb	Consult
192668	18 ft x 6 ft 6 in	19 ft x 8 ft	Multiple animal scale - load cell design, X-Lug	6,040 lb	Consult
192665	20 ft 11 in x 6 ft 6 in	22 ft x 8 ft	Multiple animal scale - load cell design, X-Lug	6,680 lb	Consult
192664	20 ft 11 in x 9 ft	22 ft x 10 ft	Multiple animal scale - load cell design, X-Lug	7,900 lb	Consult
X-Plank Flooring					
191804	12 ft 1 in x 6 ft 6 in	13 ft x 8 ft	Multiple animal scale - load cell design, X-Plank	4,540 lb	Consult
191803	14 ft x 6 ft 6 in	15 ft x 8 ft	Multiple animal scale - load cell design, X-Plank	4,920 lb	Consult
191566	16 ft x 6 ft 6 in	17 ft x 8 ft	Multiple animal scale - load cell design, X-Plank	5,420 lb	Consult
185865	18 ft x 6 ft 6 in	19 ft x 8 ft	Multiple animal scale - load cell design, X-Plank	6,040 lb	Consult
191805	20 ft 11 in x 6 ft 6 in	22 ft x 8 ft	Multiple animal scale - load cell design, X-Plank	6,680 lb	Consult
191806	20 ft 11 in x 9 ft	22 ft x 10 ft	Multiple animal scale - load cell design, X-Plank	7,900 lb	Consult

Price does not include instrumentation

Options/Accessories

Part #	Description	Price
174071	482-AG Indicator, LCD display, rechargeable battery, 115VAC	Consult
131436	920i® based weigh center with TM-U295 ticket printer DC version	Consult
167689	920i 115 AC indicator with group animal software	Consult
169478	920i 12V DC indicator with group animal software	Consult
156758	AC adaptor for 920i weigh center or indicator	Consult
23113	TM-U295 ticket printer	Consult
15547	Blunt end cable for printer to indicator	Consult
185872	Indicator/printer enclosure	Consult
171966	Pedestal	Consult
71630	Scale tickets, 500/pack	Consult
131670	14 ft 4-pin male connector to blunt end cable	Consult
177788	Transient protection package	Consult
127561	16 ft 4-pin female connector to blunt end cable (will mate with PN 131670 or PN 176542 if extension cable is needed)	Consult
189536	Solar panel retrofit kit	Consult
156692	Foundation drawing, slab (see reduced drawing in drawing section of this catalog)	N/C
163803	Foundation drawing, 2 pier (see reduced drawing in drawing section of this catalog)	N/C

Custom Sizes

Class	Description	Price
Legal For Trade Application Parameters for MAS-LC Series CC 99-091		
Class III-L	Applications: Livestock (multi-animal) up to 25,000 lb, 5 lb increments	Consult

