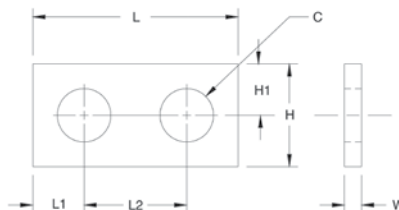
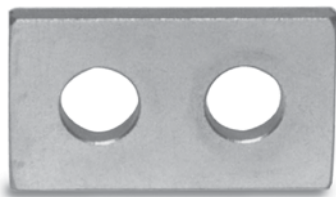


Load Cell Spacers



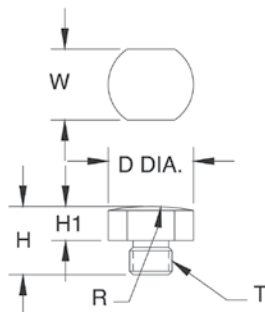
Standard Features

- Use with most popular single-ended beams
- Provides flat mounting surface required for optimum load cell performance
- Zinc-plated mild steel or stainless steel

Part Number/Price

Part#	C	H	H1	L	L1	L2	W	Price							
Mild Steel															
17754	0.53 in	13.4 mm	1.25 in	31.8 mm	0.62 in	15.7 mm	2.25 in	57.2 mm	0.62 in	15.7 mm	1.00 in	25.4 mm	0.25 in	6.4 mm	Consult
17755	0.78 in	19.8 mm	1.50 in	38.1 mm	0.75 in	19.1 mm	3.00 in	76.2 mm	0.75 in	19.1 mm	1.50 in	38.1 mm	0.25 in	6.4 mm	Consult
17756	1.03 in	26.2 mm	2.00 in	50.8 mm	1.00 in	25.4 mm	4.00 in	101.6 mm	1.00 in	25.4 mm	2.00 in	50.8 mm	0.25 in	6.4 mm	Consult
18260	0.53 in	13.4 mm	1.25 in	31.8 mm	0.62 in	15.7 mm	2.25 in	57.2 mm	0.62 in	15.7 mm	1.00 in	25.4 mm	0.37 in	9.4 mm	Consult
Stainless Steel															
17757	0.78 in	19.8 mm	1.50 in	38.1 mm	0.75 in	19.1 mm	3.00 in	76.2 mm	0.75 in	19.1 mm	1.50 in	38.1 mm	0.25 in	6.4 mm	Consult
18383	0.53 in	13.4 mm	1.25 in	31.8 mm	0.62 in	15.7 mm	2.25 in	57.2 mm	0.62 in	15.7 mm	1.00 in	25.4 mm	0.37 in	9.4 mm	Consult
18411	0.53 in	13.4 mm	1.25 in	31.8 mm	0.62 in	15.7 mm	2.25 in	57.2 mm	0.62 in	15.7 mm	1.00 in	25.4 mm	0.25 in	6.4 mm	Consult

Load Button



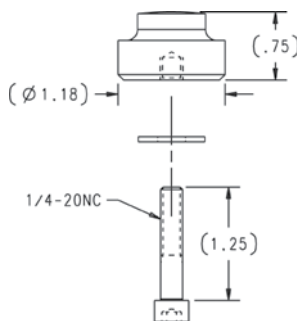
Standard Features

- Suitable for use with compression mounting assemblies, canisters, s-beams and single-ended beams
- Hardened alloy steel

Part Number/Price

Part#	T	D	H	H1	R	W	Price					
17750	3/8-24UNF	0.75 in	19.1 mm	0.60 in	15.2 mm	0.30 in	7.6 mm	2.00 in	50.8 mm	0.63 in	16.0 mm	Consult
17751	1/2-20UNF	0.75 in	19.1 mm	0.70 in	17.8 mm	0.30 in	7.6 mm	4.00 in	101.6 mm	0.63 in	16.0 mm	Consult
17752	3/4-16UNF	1.50 in	38.1 mm	0.90 in	22.9 mm	0.30 in	7.6 mm	6.00 in	152.4 mm	1.25 in	31.8 mm	Consult

Load Button Insert Kit



Standard Features

- To be used with RLSSB and RTI SSB load cells (1,000-5,000 lb)
- Hardened alloy steel

Part Number/Price

Part#	Description	Price
26112	Load button insert kit	Consult