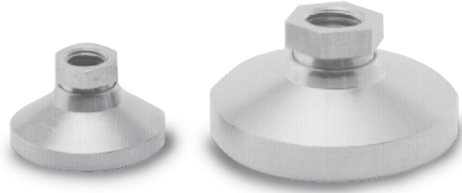


Leveling Pads



Standard Features

- Replacement feet, adapt to most floor scales
- Available in cadmium-plated steel or stainless steel
- Simple swivel design
- Use with single-ended shear beams or bending beams to provide a large, flat load introduction surface

Part Number/Price

Part #	Thread Size	Height	Diameter	Price
Mild Steel				
18817	1/2-13 NC	1.12 in	1.87 in	Consult
18820	3/4-10 NC	1.50 in	3.00 in	Consult
Stainless Steel				
18818	1/2-13 NC	1.12 in	1.87 in	Consult
18833	3/4-10 NC	1.50 in	3.00 in	Consult

Used in conjunction with leveling pad stems

Leveling Mount



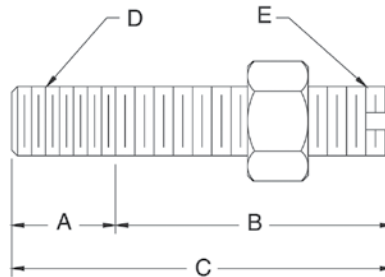
Standard Features

- Designed for use with some floor scales or machinery platforms
- Can be used as a replacement foot on the SP floor scale to limit vibrations transmitted to the scale through the floor
- Provides vibration isolation on most portable platforms

Part Number/Price

Part #	Thread Size	Height	Diameter	Price
18819	1/2-13 NC	1.81 in	5.00 in	Consult

Leveling Pad Stems



Standard Features

- For use with leveling pads
- One jam nut included

Part Number/Price

Part #	A	B	C	D	E	Slot	Material	Price		
Mild Steel										
17693	0.75 in	19.1 mm	2.00 in	50.8 mm	2.75 in	69.9 mm	3/4-10 UNC / 3/4-16 UNF	NO	1045	Consult
Stainless Steel										
17689	0.50 in	12.7 mm	1.50 in	38.1 mm	2.00 in	50.8 mm	1/2-13 UNC / 1/2-20 UNF	YES	SS	Consult
17695	0.75 in	19.1 mm	2.00 in	50.8 mm	2.75 in	69.9 mm	3/4-10 UNC / 3/4-16 UNF	NO	SS	Consult

Warning: Do not use to suspend a load